



Ainsdale Methodist Church

Weekly Notices



15th December 2024

9am Circuit Communion Service at PPW
10.45am Service led by Rev Patrick Evans

22nd December - 10am Service at Ainsdale Village Church
- 4pm Carols by Candlelight
- 6pm Raising Praise at Leyland Road Church

Mission Statement

To share locally and globally in the whole Church's purpose of the worship of God and the care of people.

Minister: Rev Patrick Evans
Tel: 07813 211501
Email: patrick.evans@methodist.org.uk

Lectionary Readings 15th December 2024

Zephaniah 3.14-20; Isaiah 12.2-6 (Canticle); Philippians 4.4-7; Luke 3.7-18

Prayer

God of mercy and power, whose Son rules over all, grant us so to live in obedience to your holy will, that at his appearing we may be raised to eternal life; through Jesus Christ our Lord, who is alive and reigns with you, in the unity of the Holy Spirit, one God, now and for ever. Amen.

Mid-week Prayers

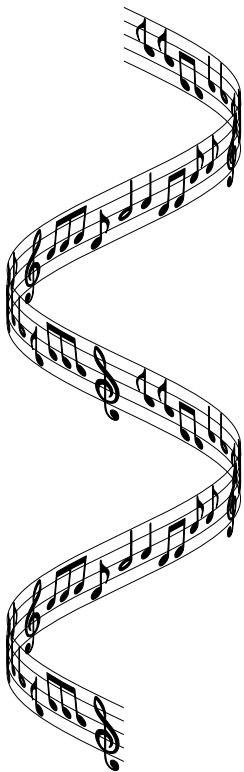
Wednesdays at 10am. All welcome.

Ainsdale Village Singers present

Christmas Cracker

A concert of festive music
"Led by" Stewart Hankinson,
Accompanist Brenda Redmond
Soloist: Katie Lang on French horn
Sunday, December 15th at 2pm
Liverpool Rd Methodist Church
Birkdale, PR8 4PD

Tickets £8 incl light refreshments
Tickets available from Steve: 07760380265
or choir members.



Church Notices

If you have any items you want including in the notices please let Lucy Lloyd know on 01704 536648 or lucy@southportmethodist.org.uk.



Christmas at Ainsdale Methodist Church

Carols by Candlelight
Sunday 22nd December 4pm

Midnight Communion
Christmas Eve 24th December 11.30pm



Churches Together in Ainsdale at Christmas

If you find it hard to embrace the usual Christmas celebrations, you may find 'The Longest Night Service' at the Village Church, taking place at 4 o'clock on Saturday 21st December, to be a more meaningful way to mark the season.

The Village Church will hold their annual *Christmas Christingle* at 4 o'clock on Christmas Eve. Everyone welcome.

We'll be carol singing again inside the Co-op on Christmas Eve morning for half an hour from 10 o'clock. Come and join in - the more the merrier!

Dear Friends

You brood of vipers!

Well, that's not a very friendly way to start this letter! I did not mean you, rather it's how the prophet John the Baptist addresses the crowds coming to him to be baptised (see this weeks gospel reading - Luke Ch 3 vs 7-18).

The crowd ask John *"and what should we do?"*. He then encourages them (and us), to *"produce fruit in keeping with repentance"*. Anyone who has two shirts should share one, and the same with food; tax collectors should only collect that which is required; soldiers should not extort money or falsely accuse people.

We very much live in a mixed economy between those who have excess and those who don't, and Christmas, a time for hope, peace, love and joy, tends to exacerbate these differences. How should we hear the words of John the Baptist this day as he encouraged the people of his day to produce fruit in keeping with repentance?

I've enjoyed my year on the allotment, seeing the tiny seeds that look of no consequence grow into the produce of abundance. As I look at the seed, I cannot see the power that is encapsulated within its outer core. It's there however, just waiting to be planted. It takes time to spring forth, its delicate and vulnerable and may succumb to the elements or the wildlife, although with enough seeds planted some will burst forth. There is power in that seed.

John's message is not so much about how we use our money or resources, although it includes that, more so it's about how we use our power that lies within us. We may think that we can make no difference on our own, although remember John was speaking to a crowd. As a collective, when they exert their power to produce fruit it will be a good harvest. If we all sense as individuals we can't make a difference and did not ask ourselves the question, "what should we do", then the power imbalance won't produce a fruitful harvest.

So, what should we do?

God bless

Patrick