

CARE ABOUT LOCAL YOUNG PEOPLE?

Inside: your guide to the work of Southport & Area Schools Worker Trust and how you can join us in making a difference.



S A S W trust



SASWtrust

Southport & Area Schools Worker Trust is a local charity, which has served children, teenagers and their schools for over two decades with an ever growing vision to provide safe spaces to explore the big issues of life and faith.

We partner with schools, youth clubs, churches and other organisations to make a lasting difference in the lives of local young people - unleashing purpose, building resilience, and bringing hope for the future.

Now is the time more than ever to shine a beacon of light and bring hope to an emerging generation. Our youth workers and volunteers are powering ahead every day of the week, visiting primary and secondary schools, leading assemblies, running workshops, holding school yard drop-ins, after-school clubs and much much more!

In an age of ever increasing need, with escalating mental health and wellbeing concerns, we need to expand our hugely in-demand work across local schools. Could you be part of a movement that makes a difference right now and in years to come?



CONTENTS:

Make A Difference	4
What We Do	5
• In Primary Schools	5
• In Secondary Schools	6
Who We Are	8
• Staff	8
• Volunteers, trustees, partners & YOU!	9
• Scripture Union LMP	10
• Our History	11
The Vision	13
Funding	14
Ways to Give	15
A Tour of SASW Trust Projects	16
• Safe Space Assemblies & Workshops	17
• Mission Impossible	18
• Good Show Christmas Productions	19
• It's Your Move	20
• Secondary School Safe Space Project	21
• Impact Youth	21
• Sweaty Church	22
• You, Me & R.S.E	23
• Walk Through The Bible	24
• CAP Money Kids	25
• Summary of Project Costs	26
Tear-Out Pages:	26
• Newsletters Signup	27
• Prayer Chain	27
• Pledge & Gift Aid	29
• Standing Order Form	31
• Sharing our work with teachers	33
• Sharing our work with young people	35

MAKE A DIFFERENCE

STEP 01 : KEEP READING

This booklet is designed to guide you through all that is Southport & Area Schools Worker Trust - our mission, the examples of our work, our team and the needs in our town. We hope it both informs and inspires. You can also always find out more too at:

www.saswtrust.com

STEP 02 : SPREAD THE WORD

Do you know any families with primary school children? Link them up with the right content from our website and online channels. Know any teenagers? Tear out the 'Safe Space' page at the back of the booklet and pass it to them. Know any school staff? Tear out the bookings page at the back of the booklet and have them get in touch with us!

STEP 03 : SUPPORT SASWT

Support our work financially: head to pages 14+15 to find different ways to donate one-off or regularly and resource the growth of our provision, which already costs tens of thousands each year. That said, every pound contributes to seeing lives changed!

STEP 04 : PRAY

We are a Christian charity, a local mission partner of Scripture Union and supported by many different churches. We carry out our work inspired by the belief in the message of Jesus and the hope He brings. If you share in this belief with us, we warmly invite you to join us in prayer for this emerging generation of young people. Our regular email newsletters and prayer chain will definitely be of use, keeping you up to date and inspiring your prayers. Sign up online or with the tear out contact page at the back of the booklet.



WHAT WE DO:

PRIMARY SCHOOLS

We have long-standing relationships with 70% of the primary schools in Southport, Formby and the surrounding areas (although we'd love to increase this number!)

We will regularly visit many of these schools to lead assemblies or 'collective worship' covering a huge variety of topics such as Bullying, Getting on and falling out, Achieving Goals, and a range of Christian Values. We always have fun - using drama, music, games, and video technology - to get the message across in an engaging, interactive and memorable way. (Valued at £50-£100 per booking, depending on scale.)

We have several series of RE and PSCHE lessons that we lead throughout the year, including 'You, Me & RSE' (Relationships & Sex Education), CAP Money Skills, Walk Through The Bible, active RE lessons, and much more. (Valued at £40-£80 per lesson, depending on scale.)

We are often asked to take themes from our assemblies or lessons to expand into day-long workshops where the whole school take it in turns to learn creatively, practically, actively, and kinaesthetically. These can vary from PE based activities, craft, or a day of Prayer Spaces. (Valued at £500 per day.)



Our 'Good Show' primary school project calls on a large group of volunteers and offers 3 presentations to the schools each year, one each term:

- A pantomime style dramatic presentation looking at the real meaning of Christmas (Valued at £300 per school.)
- A large-scale Easter presentation in the style of Mission Impossible, for which SASWTrust is renowned for. (Valued at £500 per school.)
- A presentation called Moving On for year 6s moving into high school. (Valued at £50 per school.)

We run a several different series of primary after school clubs:

- Awesome Club where we teach 'awesome skills' based on the fruits of the Spirit found in Galatians 5:22. (Valued at £750 per term.)
- Guardians of Ancora Club where we explore stories from the New Testament using a tablet based platform game from Scripture Union. (Valued at £750 per term.)
- Sweaty Church, which is a continuous worshipping community of children (and often their parents) centered about sport, team games, sung worship, Bible discussion and group prayer. (Valued at £1,400 per term.)

SECONDARY SCHOOLS

In the past we tried to do this by facilitating classic “Christian Union” style lunchtime clubs. However, over the years we have learnt the importance of serving the 95+% of young people with no church connection, which means instead of expecting a small handful of young people to come to find us tucked away in a classroom, we set ourselves up to go to where they are, both in physicality and holistically.



Our lunchtime ‘Safe Spaces’ do exactly that, as we pop-up our gazebo setup out on the school yard, most lunchtimes speaking to over 100 students in each school who come to check in with us weekly. As Christian workers and volunteers, we aim to create a safe space for those students to explore the big issues of life and faith. We provide an opportunity for them to rate their mental health and wellbeing with our traffic light system (data which the school leadership then use to shape their pastoral care), to explore the roots of how they are feeling, and explore positive practices. We find as we embark on this journey with so many young people across our five main secondary schools, it has become a great platform for building trusted relationships, where deeper issues of life and faith are regularly discussed very naturally. We value a lunchtime Safe Space at £100 per day (including staff hours), but again seek to offer this as a free resource to schools.

We are occasionally asked to lead assemblies in high schools for various year groups on topics such as self-worth, peer-pressure, anti-bullying and so on. We often expand these topics into workshops, ran either by ourselves, or bought-in national Christian projects - energetic bands from The Message Trust, for example. We have also made guest appearances in RE lessons and PSCHE lessons.

Our charity staff have worked with numerous volunteers, apprentices from the Pais Movement, and local church youth workers in order to best serve the local secondary schools’ needs, working with them to boost their statutory provision of spiritual, moral, social and cultural education.

Our work in schools extends into the rest of the community through our network of churches and youth work throughout the area. We are keen to enable, equip and mobilise the local Church more in this way, in order to best continue the journey with local young people we discover to be keen to explore, respond and grow in the Christian faith.



WHO WE ARE:

SASWTRUST STAFF :

Our projects are currently led by our two staff members, who happen to be married:

TABZ

'Tabz' (more formally known as David Taberner) has been our lead Schools Worker for almost a decade. He started pioneering youth work at just 18 years old, responding to a local need, filled with a passion he received through the 24-7 Prayer Movement as a relatively new Christian. Alongside this, Tabz actually studied civil engineering and project management to masters level, but through a growing passion for young people and God's work, he found a calling to our ministry in late 2013 and made the brave step of a career change. Tabz is also particularly involved in Christ Church and the Southport Methodist Circuit as a preacher as well as other inter-church projects. He's a semi-pro musician (in his limited spare time!), loves techie design projects, and has a slightly characteristic hairstyle!

HETTIE

Hettie is Tabz's (much) better half who moved to Southport in May 2017 taking up a new post as pioneer of our Good Sport Ministry. Her role has evolved and grown beyond sports ministry since then, due to the popularity of all our different projects and the gifts she brings. She is originally from Burnley, where she was a Kids Pastor for a large church alongside her Children In Need funded youth work job managing **youngvolunteers** in one of the 10 most deprived areas of the UK. Hettie is currently studying to be a primary school teacher, using SASW Trust projects as teaching experience (which we are really benefitting from!) She is also a qualified football coach, has played for two women's teams, is a great singer, 83% extravert, and still manages to be way cooler than Tabz!





VOLUNTEERS + PARTNERS

We couldn't do any of the work we do without the support of a diverse bunch of volunteers. In fact, it would be counter to our ethos to even try without them! Engaging and equipping local church communities to be the change they want to see, making a lasting difference to children and young people is a central part of every project we run.

Sometimes we're all hands on deck for projects like Mission Impossible. Other times there's just a few of us, specifically trained in different areas, eg. pastoral conversation, mental health first aid, drama & communication.

We have several churches who don't just partner with us in sourcing volunteers, but also with the involvement of their staff - not just invaluable youth workers, but also pastors, vicars, ministers, and outreach workers, to name a few! They never come with an 'agenda', other than simply to serve. Yet, so often we hear amazing stories of children, young people, and even families, beginning to engage with church events in the most beautifully organic way because of the way they have encountered our volunteers & partners.

We work closely with Scripture Union's 'Revealing Jesus Framework' and provide training for volunteers through the likes of our 'Youthscape Essentials' course. Although, there's plenty of jobs to do, **that** just a quick induction could be all it takes for you to join us in making a difference - how about it?

TRUSTEES

We are blessed with a board of trustees to share the load of ensuring all is managed well behind the scenes, working together to strategise and discern our vision, keeping our staff to account, whilst raising the necessary funds to continue and extend the projects we run. They are an eclectic mix of clergy and school staff, to software developers and grandparents - each member invaluable gifted.

YOU!

We believe you have a place in our mission! Whoever you are, whatever your background, stage of life, range of skills, or experience - the children and young people we work with **NEED** you! There's plenty of behind the scenes jobs that you might never have thought of, as **well the** face-to-face work.

Like the old proverb says, "it takes a village to raise a child". So if you know children, through family or otherwise, you're in the perfect place to continue the conversation, supporting them in their exploration beyond school. If not, always remember our "Make A Difference" stages on Page 3: Keep reading, Spread the word, Support us & Pray!



REVEALING JESUS

[SU.ORG.UK/REVEALINGJESUS](https://su.org.uk/revealingjesus)

Southport & Area Schools Worker Trust is a Local Mission Partner of Scripture Union. We love our partnership, the network and community across the SU movement, having had years of essential support in developing our projects.

95% of children and young people in England and Wales don't go to church BUT many are open to explore. That's why SU have launched the 'Revealing Jesus' mission framework, to help us, you and your church to connect and journey with 'the 95'. Follow their weblink above to find out more about how we can become 'faith guides' together!

S A S W trust

A Local Mission Partner of





SASWTRUST HISTORY

SASW Trust was set up as a Scripture Union Local Mission Partner in 1999 by churches and Christians in Southport and Formby, who wanted to serve their local schools.

For over two decades, the majority of schools across Southport, Formby and surrounding areas have benefitted through our various projects. These have been delivered by a succession of employed schools workers, countless church volunteers and staff, plus teams of missionaries from Christian organisations such as the Pais Movement and Master's Commission.

Many have worked tirelessly to see this work continue, grow and develop through working in partnership with local schools and local churches, in order to see a substantial lasting impact across Southport in the years to come.

Original Aims of SASW Trust:

- To contribute to the educational, moral and spiritual development of young people by working in partnership with teachers, youth leaders and other schools workers.
- To work alongside teachers and their students to help develop an understanding of God's presence and purpose in their lives.
- To be a friend and free resource to schools and colleges, Christian teachers and students.
- To empower and equip young people to be a strong positive Christian influence in their schools.

In doing so the Trust will be:

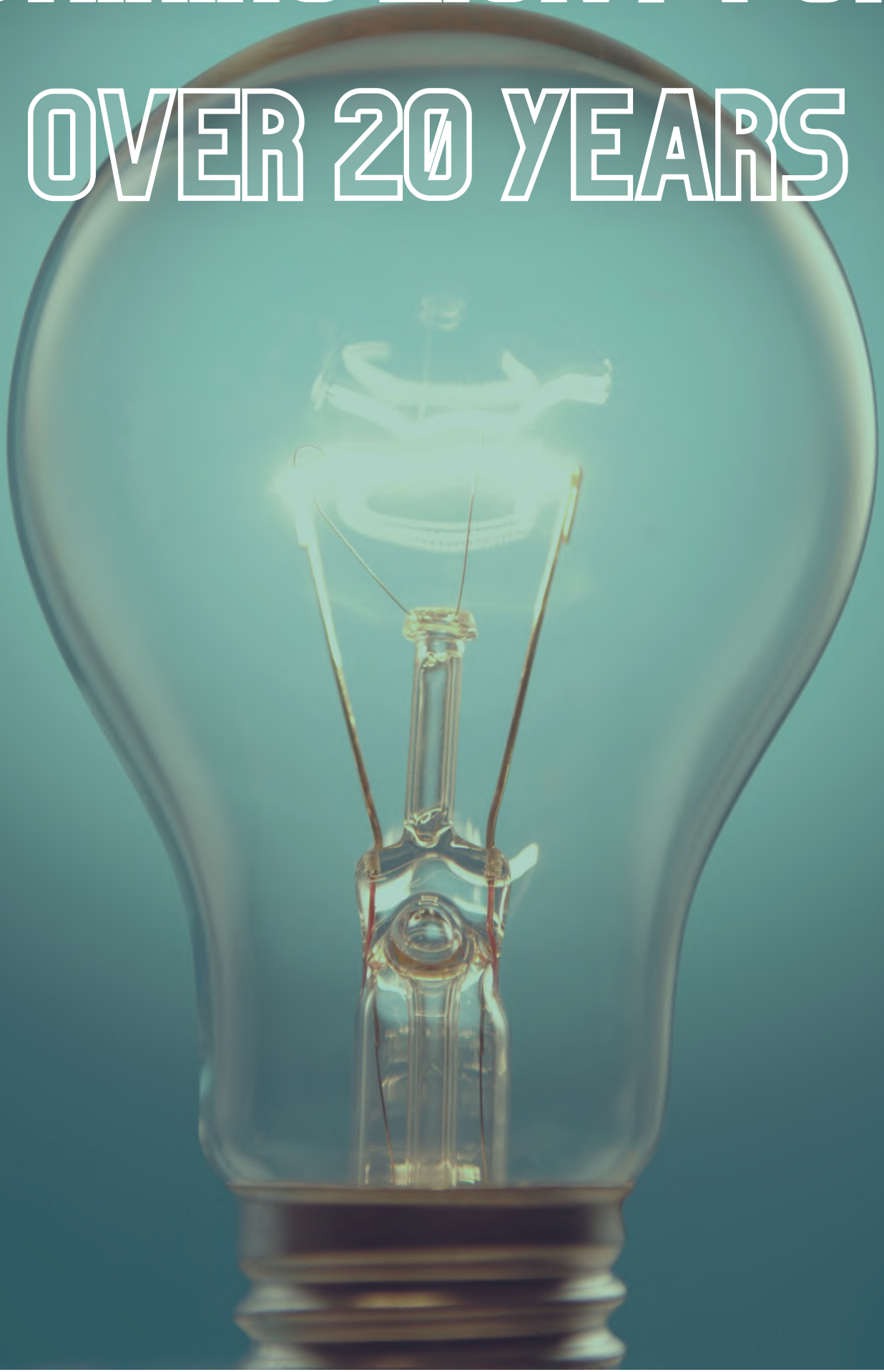
- Interdenominational
- Representative of the churches in Southport & Formby.

FOR SUCH A TIME AS THIS

It's been a long journey, but we are totally convinced we have been brought to this point "for such a time as this". Each year we theme our vision around a Bible passage pressing on our hearts, and as we journeyed through the COVID-19 pandemic with the ongoing years of recovery, we've repeatedly been drawn to the ancient story of Queen Esther. Her cousin **pleas to her** to speak up for the needs of their people, to rescue them from their enemy's torture - to realise that she has been given this opportunity for such a time as this.

And today we find ourselves with an incredible opportunity to speak up and make a difference for a generation of young people. The impact of the last few years on this generation is difficult to comprehend, but we have found the needs amongst children and young people at the moment greater than ever before. Whilst overall national church attendance might appear grim, the demand for school-based youth work and attendance of our projects has completed boomed. We even made a short documentary about the whole experience and what we've learnt from it - that we have been "positioned for such a time as this". (Available on YouTube.)

SHINING LIGHT FOR
OVER 20 YEARS



VISION

OUR FUTURE?

We are convinced of the desperate need to continue growing and developing our work for years to come. After seeing the value of our work growing so powerfully over the last few years, we embarked upon our most recent season feeling led to reflect on the prophet Isaiah's bizarre call to the exiled Israelite people to "enlarge the place of your tent, stretch your tent curtains wide, do not hold back; lengthen your cords, strengthen your stakes."

Within a week we found ourselves thrust into a season like none we've ever experienced. In just a few days we had already spoken with over 1000 young people and had meetings with headteachers asking for more and more of us - to the point we had to draw the line: admit we were beyond capacity for our small team of staff and volunteers, and start numerous waiting lists!

It's clear we need to grow - to work with churches across Southport to collectively "enlarge the place of our tent", stretching the curtains from beyond our church walls to make our whole community a space for people to find everlasting light and hope.

This is why we are doing all we can to expand our resources and grow our team. But, more than that, we believe we are to find as many ways as possible to enable and equip Christians in Southport to connect and journey with young people in fresh, relevant and exciting ways.

We have been licensed by Youthscape to run their 5-10 week Youthscape Essentials training course as just one tool in our belt and have already completed a fruitful series of sessions, prompting & equipping one particular church to pioneer a new weekly youth night.

There is much opportunity right now - we step forwards in faith and invite you to follow along the journey with us.



ENLARGE THE PLACE OF YOUR TENT

Isaiah 54:2

FUNDING

We are a charity local to Southport and survive purely on voluntary funding (Charity No. 1075068). We are immensely grateful to the handful of generous individuals and church congregations who regularly give to this work. Without them we would never have got to this point.

It's impossible to measure the full extent of the impact our work is having on local children and young people, but from what we do see, we know for certain that lives and futures are being shaped and changed for the better.

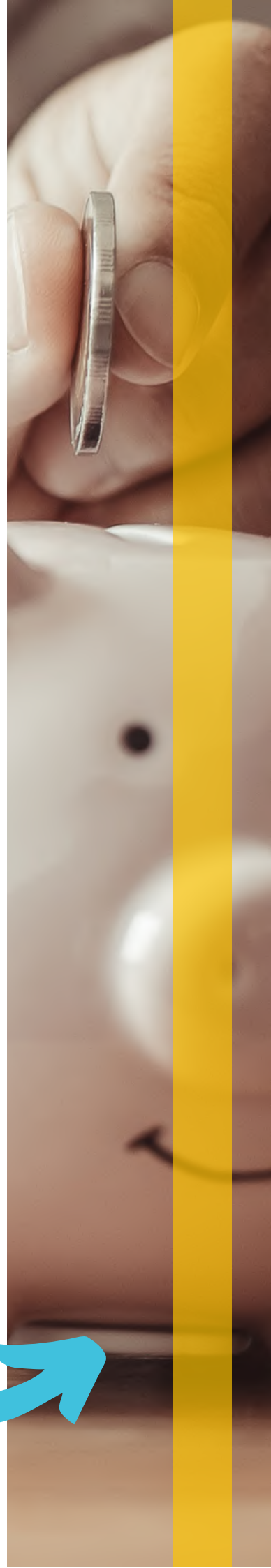
Our annual expenditure varies around £55k, on a very limited budget. However, our committed income falls around £35k. Meaning we have a lot of work to do to break even, let alone expand our work to address the local needs we see daily with our proven track record.

The rest of this booklet is dedicated to taking you through the various projects we run and what they cost. A few examples you might find:

- £11 per month could fund a child having the opportunity to be part of a Sweaty Church worshipping community.
- A £80 donation could fund a primary school assembly.
- A £100 donation could fund a Safe Space lunchtime session for 140+ secondary school students to check-in with us on their wellbeing.
- A £500 (£42/month) donation could fund one whole school having the annual opportunity to experience our touring Christmas production.

WAYS TO GIVE

We value any contribution that you wish to give and hope this booklet gives you the assurance that it will make an impact. We have multiple ways to give listed on the next page.



STANDING ORDER FORM

Please find the tear-out page at the back of the booklet to request your bank set up a regular donation. Please take this to your bank to instruct them and then let us know by email: info@saswtrust.com or by filling out and returning the tear-out Pledge & Gift Aid form also at the back of the booklet.

BANK TRANSFER

To transfer a one-off donation, please use our bank details: Southport & Area Schools Worker Trust, Account No. 41487485, Sort Code 40-42-30 at HSBC, 331 Lord St Southport, PR8 1NJ Again, please contact us as above to let us know!

CHEQUE

Please address cheques to "Southport & Area Schools Worker Trust" with your chosen amount and deliver with the Pledge & Gift Aid tear-out Page at the back of this book

GIFT AID

If you are a tax payer, no matter what means you choose to donate, we can claim 25% extra on top of what you give. Please see the tear-out gift aid form at the back of the booklet.

LEGACY

Write a tax free residuary gift into your will for SASW Trust. We recommend a solicitor process this with you, but please let us know so we can better plan our future and thank you properly.

ONLINE GIVING

If you are comfortable, you can access our online giving tools quickly and efficiently at www.saswtrust.com/give

TEXT GIVING

Text SASWTRUST to 70085 to donate £10, or SASWTRUST £## to 70085 to donate a figure of your choice Texts cost the amount you enter plus one standard rate message.

FUNDRAISING EVENTS & FACEBOOK

If you use Facebook, you can donate directly through our facebook page:

www.facebook.com/SASWT

Or share the link as a fundraiser amongst your friends:

www.facebook.com/fund/SASWT

Several people have done this to mark a significant occasion, such as an alternative to receiving presents on a birthday.



*town
starts
here...*

SASW TRUST PROJECTS

Take a guided tour with us through the many projects of Southport & Area Schools Worker Trust. The following pages unpack our different projects in more detail, giving you a whistle-stop tour of our daily, weekly and annual activities. Each description includes our attempt to show how much the activities cost to run and the value we believe they bring.



SAFE SPACE ASSEMBLIES+WORKSHOPS

We have long-standing relationships with 70% of the primary schools in Southport, Formby and the surrounding areas (although we'd love to increase this number!)

We regularly visit many of these schools to lead assemblies or 'collective worship' covering a huge variety of topics such as Trust, Truthfulness, All Different All Equal, Compassion, Changes, Community, Courage, Creativity, Forgiveness, Fairness, Promises, Joy, Generosity, Good To Be Me, Justice, Perseverance, Positive Attitudes, Respect, Responsibility, Talents, Thankfulness, Bullying, Getting on and falling out, Achieving Goals, plus a range of other Christian Values and festival themes. We always have fun - using drama, music, games, and video technology - to get the message across in an engaging, interactive and memorable way.

We occasionally get asked to expand these topics into a whole day of workshops moving through the different classes in a school, providing memorable activities to help children embed the message. This may often take the form of a "Prayer Spaces In Schools" day.

We have a full range of professionally produced video assemblies, all downloadable from our website and used widely in classrooms locally and further afield. These all follow a similar format, with a relevant icebreaker, animated Bible story and engaging message from one of our team to apply the theme and leave children with a challenge to reflect on. Although originally created during the COVID pandemic for home learning and classroom bubbles, the videos remain well used with 750 views in the last 12 months.

Safe Space Assemblies project aims:

- To create a safe time and place in busy school schedules for children to connect with, and explore, the big issues of life and faith.
- To partner with schools in contributing to the moral, social, cultural and spiritual development of children through application of Biblical wisdom.
- To provide space for children to explore an understanding of God's presence and purpose in their lives.
- To pursue an effective balance of both excellence and authenticity in presentation, engagement, pupil involvement and use of technology.
- To create memorable messages that stand out, leaving a lasting impression and contributing to children's personal faith responses and growth journeys.

Cost:

We value a standard assembly / collective worship session at anywhere between £80-£170: teaching time, prep & setup time, fuel, printing & resources. We value a uniquely tailored day-long workshop at £900.

We currently average 35 assemblies / collective worship sessions annually, costing £3,800 per year, plus around £2,500 of annual resources put into workshop days. To extend this offer to more schools and sustain an annual provision at no cost to each partnering school, we are seeking £12,600 annually.



Mission Impossible is our most loved & longest running production, although many of the Year 4-6 pupils who visit would describe it as more of an 'experience'! In the last three weeks of term, leading up to Easter, we annually transform Scarisbrick New Road Baptist Church into a mock secret agent headquarters. We draw together a large team of volunteers who act as secret agent leaders who greet pupils and enlist them as secret agents for the day, where they are led on a mission of discovery by Agent T (True) and Agent F (False).

In four squads the pupils move around different mission zones in the building where they look at aspects of the Easter story in order to reach their own personal verdict on the events and whether or not Jesus rose from the dead. The production is a fully immersive challenge lasting 90 minutes in total.

Zone 1 starts around a communion table with some investigative role-play looking at the account of the Last Supper and then follows into the Garden of Gethsemane.

Zone 2 joins an animated Agent Lawesome in the court room with a large touchscreen of evidence from Jesus' arrest where we ask the children the question "Was the trial fair?"

In Zone 3's 'holographic suite' we have a very moving 'eye witness' account from Mary Magdalene. The passcode to trigger playback is found from clues, escape room style. After the video we take the opportunity to have a discussion about "Why did Jesus have to die?"

Zone 4 is at the doctor's surgery learning about the biology of the crucifixion and how they would have known that Jesus had really died.

Finally, Agents T and F receive a video transmission from their boss telling them of new evidence that Jesus came back to life. Agents T and F invite the children to turn to the back of their passports, where they find 'Zone 5' written, with the question "Did Jesus come back to life?"

Each year we draw in around 400 Year 5 or Year 6 children from their local schools. By the end of each session, we tend to find over 80% of them leave having come to the conclusion that they personally consider Jesus to have risen from the dead almost 2000 years ago.

Cost

We value the Mission Impossible project at £700 per session, including: staff hours, fuel, resources, set equipment and a figurative sum to reflect the time, equipment and building hire volunteered/gifted to make the project happen.

Our most recent season included 10 performances and due to a great deal of donated time and equipment, only cost us £3,000. To extend this offer in future years and sustain an annual provision with all costs covered, we are seeking £11,000 annually.



**GOOD
SHOW**
S|A|S|W|trust

GOOD SHOW CHRISTMAS PRODUCTIONS

Every year we produce a fresh 45-minute production from scratch for the primary schools of Southport and beyond. Our staff and volunteers tour from school to school throughout December taking the show on the road and performing up to 20 times to both Key Stage 1 and 2. From Frozen, to The Greatest Snowman, to superheroes, to the Lion King, to whatever other themes we've been able to dream up, our productions have been touring Southport & beyond since 1999.

Our most recent production was inspired by the works of Roald Dahl with a dramatic story following everyone's favourite "bookworm" at school as her and her classmates guided over 4000 children through their story of fun, music, drama, comedy, festivity and meaning. Up against a very grinchy headteacher character, Matilda and her classmates finally found the power inside themselves to change the world through a secret class nativity play.

Each performance finishes with an inspiring message and challenge after reflecting on the difference the first Christmas made and the impact of the life Jesus went on to live, bringing hope to billions for centuries to come.

An incredible amount of preparation work goes into each year's show, especially given the high level of multimedia production. The last three years of productions were also adapted for full length video, professionally edited and uploaded online for everyone to watch. We are always thrilled to hear the great feedback from families who have watched it together at home.

The Christmas productions are always the most well remembered feature of our primary school work, particularly in the conversations we have years later with students in secondary schools.

Cost:

We value the Christmas production at £500 per performance, including: staff hours, fuel, plus a fraction of the costs of the set design and months of content creation.

Our most recent season included 18 performances and, with a few savings along the way, cost us £6,400. To extend this offer in future years and sustain an annual provision at no cost to each partnering school, we are seeking £10,000 annually.

IT'S YOUR MOVE

'It's Your Move' is an interactive, fun-packed introduction to the world of secondary school based on a resource from Scripture Union. Because we work as youth workers in secondary schools across Southport, we see it as a top priority to offer this presentation to year 6s every year to help them with their move.

We dispel some of the common worries around secondary school transition with many years of wisdom. Due to our uniquely consistent role across both stages of their school life, we reassure them with our promise to help them through the whole process, heavily promoting our secondary school Safe Spaces to explore the big issues of life and faith. Each 'It's Your Move' presentation is a 30-minute balance of memorable, light-hearted activities alongside meaningful empowerment for the future, with the space to consider the impact personal faith could have on their journey too.

We aim to create a safe space where Year 6 children can air their concerns and raise questions about their transition to secondary school. The session encourages boldness, brevity and confidence in pupils' next steps, with the space to consider the impact personal faith could have on their journey.

The session is accompanied by a collection of resources, including our It's Your Move bookmarks, secondary school 'Safe Space Southport' promotion, online resources and several copies of Scripture Union's 'It's Your Move' book to share between the class. (Often partnering local churches will offer to fund a book for every child in the class, costing an approximate total of £35 due to our status as Scripture Union Local Mission Partners.)

Cost:

We value this project at £65 per class: teaching time, prep & setup time, fuel, + £10 printing & resources.

We currently visit an average of 10 primary schools with the 'It's Your Move' Project, costing £650 per year. However, our youth work team are active in every Southport secondary school, and therefore we think it would be valuable extend our 'It's Your Move' offer to all local primary schools. To sustain an annual provision at no cost to each partnering school, we are seeking £1,200 annually.

Further Growth:

A second phase of growth would be to extend this offer beyond Southport, in conjunction with the setup of Safe Spaces in the secondary schools of neighbouring towns. For example, to visit each primary school in Formby we would like to raise a further £500 annually.



SECONDARY SCHOOL SAFE SPACE PROJECT

A project so central to all our work, we couldn't help but explain it already back on page 6!

Cost:

With five secondary schools per week, two of which have double lunchtimes, the Safe Space project has a current annual value of £35,000.

To sustain an annual provision at no cost to each partnering school, and to extend our offer to the likes of after-school sessions, specialist workshops, online delivery, etc, we are seeking £40,000 annually. This would support staff time, provide better equipment and resources, and improve the quality of engagement significantly to grow the project and better achieve its objectives, supporting young people with safe spaces to explore the big issues of life and faith.

As per our 'It's Your Move' project, if we were to extend to secondary schools in neighbouring towns such as Formby, we would need around £30,000 to contribute to extra staff and resources.

IMPACT YOUTH

Impact Youth is a community youth project we help to facilitate in the Ainsdale area. Engagement of young people with church through traditional Sunday services and fellowship groups is very sparse (<5%). However, the Churches Together in Ainsdale have seen this as a creative opportunity. They partner together to provide something alternative, which aims to take the ethos and success of our secondary school Safe Spaces and shine this same light into the local community through a wonderful church partnership.

As with our lunchtime sessions in secondary school, we aim to create a safe space for the young people attending Impact to explore the big issues of life and faith.

Currently meeting in the cafe/lounge and sports hall at Ainsdale Methodist Church, we transform the space once a week into a youth venue with big screens, games consoles, lights, music, chill-out space and a variety of sports.

As with lunchtimes, we provide an opportunity for young people to rate their mental health and wellbeing with our traffic light system as they arrive.

Around half way through the evening, we provide a small meal and cake, followed by "Cake Space" - a chance where we gather all the young people together to chat over cake and drinks, build community in a fun way and discuss our 'Rooted' question of the week from Scripture Union. It's a great opportunity to bring a weekly burst of input that builds on the relationships we have developed through school and also provides opportunity for those young people who are beginning to show an interest in exploring, responding and growing in the Christian faith.

We value one week's session at Impact at £330, however through much donated time, equipment and venue costs, the project has recently only been costing £6,400 per year. To extend this offer in future years and sustain an annual provision, we are seeking £14,000 annually. This would fund more opportunities, such as a youth worship gathering as the faith of the young people blossoms, plus a staff member committed to this particular area to best mentor them in them as they develop.

SWEATY CHURCH

An award-winning, continuous worshipping community of children (and often their parents) centred around sport, team games, sung worship, Bible discussion and group prayer.

Sweaty Church is a programme we run through our Good Sport project for exploring Collective Worship through active games. We have seen it work as a lunchtime club, after-school club or even fitting into lesson time, but it has proven most popular and effective as after school.

Sweaty Church was designed in-house to have a deliberately high reliance on volunteers from connected established church congregations, in order to model family and discipleship across different expressions of Church.

A typical session includes teams of up to 8 children being mentored by their volunteer team leaders as Hettie (our trained sports coach) leads everyone through different sports and games, sung worship and a Bible story, before finishing with discussion and prayer in individual teams. Each team leader nominates a captain from amongst the children for the next week, as a means of publicly encouraging their good engagement.

At the end of each half term, we invite parents, carers and siblings to join us for a special Family Sweaty Church. Activities are tailored towards families working together and discussing the Bible story together. Often extra members of connected established church congregations will also join for these special sessions, serving refreshments and taking away prayer requests to their congregations' prayer meetings.

Several church primary schools see Sweaty Church as an opportunity to explore worshipping communities in line with their work towards Church Partnership Awards from the Church of England Department for Education, improving their family and community links in a way that is both active and wholesome. A number of schools are keenly waiting for us to have the capacity to bring them their own Sweaty Church, and Scripture Union have published our resources, which are now being used up and down the country!

Cost:

We value this project at £1,400 termly per school: 13hrs staff delivery time, 6.5hrs staff prep time & setup time, fuel, £50 towards equipment & resources, and a figurative value placed on the role volunteers (for whom the project couldn't, and shouldn't, exist without).

We currently work with only one primary schools on this project, costing £4,000 per year. However, we have a current waiting list of 5 schools keen to start a Sweaty Church! To extend this offer to more schools and sustain an annual provision at no cost to each partnering school, we would need at least an annual £12,000 initially.



YOU, ME + R.S.E.

We have several series of RE and PSCHÉ lessons that we lead throughout the year, including “You, Me & RSE” (Relationships & Sex Education), CAP Money Kids, Walk Through The Bible, active RE lessons, and much more. (Valued at £40-£80 per lesson, depending on scale.)

‘You, me and RSE’ is a unit of work for year 5&6 covering the RSE curriculum, created in line with government guidance and in consultation with local schools. The unit provides pupils with factual information from trusted adults that helps them to learn about positive relationships including romantic relationships, puberty and reproduction. The sessions contain different activities to engage pupils and give them many opportunities for discussion.

The unit was requested by local Headteachers and written by SASWTrust. Parents, staff and pupils have given feedback on this work and parents in particular have valued being involved and commented on how perfectly pitched the lessons are for the age group. After requests from staff, a second unit was created for the end of Y6 preparing the pupils for specific challenges at high school. This unit considers physical and mental health, boundaries, consequences and making good choices, including not taking away the choices of others (consent). These sessions help pupils to make more informed choices around what they watch, play and do, considering the reasons for age ratings and consequences of certain actions.

Main objectives:

- To partner with schools in providing an education in:
 - what to look for in a good friend and how to be a good friend
 - how to recognise the signs of healthy and unhealthy relationships
 - what someone can do if they are in an unhealthy relationship
 - what makes every family different and unique
 - what marriage is and why some people choose to get married
 - physical and mental health and wellbeing
 - how bodies change during puberty and how to handle those changes
 - how babies are conceived, form, grow and are born
- To deliver quality sessions that provide a helpful service to schools
- To instil confidence in pupils as they grow so that they understand how precious they are and are worthy of being treated well
- To share Christian values for positive relationships and love at the heart of the Christian faith

Cost:

We value this project at £300 per class: 6hrs teaching time, 4hrs prep & setup time, fuel, £20 printing & resources, plus a fraction of the cost of content creation. The Year 6 package is an add-on, which is 2 lessons rather than 4.

We currently work with five Year 5 classes and two Year 6 classes on this project, costing £1,400 per year. To extend this offer to all five Year 6 classes and sustain an annual provision at no cost to each partnering school, we are seeking £1,700 annually.

WALK THROUGH THE BIBLE

Alongside our other RE & PSCHÉ lessons, we are keen to offer more of our Walk Through The Bible lessons. Walk Through the Bible is today's largest global network of Bible teachers, presenting fun and engaging overviews of the Bible to all sorts of audiences. The 'OT Mini' Course is a particular set of five RE lessons giving an overview of the Old Testament for Year 5 and/or Year 6, through 40 short stories, each with memorable hand signs. The lessons tie in really closely with Understanding Christianity on the Church of England's KS2 curriculum. David (Tabz) is trained by WTTB and has worked with them to offer OT Mini locally in three of our local primary schools.

The feedback from staff and pupils is always very positive, with pupils referring to the lessons as the highlight of their week and some of them even wishing the Bible was bigger! Each story is led in an interactive, visual and participatory manor with a focus on placing each within their historic and geographical context - really bringing the Bible to life memorably and effectively.

Main objectives:

- To offer local primary school children an accredited resource for understanding Christianity, fitting perfectly with the 'People of God' unit for upper Key Stage Two.
- To teach the biblical storyline with accuracy, with no spiritual applications, in a way that children can enjoy and engage with the stories presented.
- To deepen relationships with schools and pupils as they approach the end of KS2
- To provide a solid footing of Bible knowledge that pupils can draw upon when exploring the applications of the Gospel for themselves, making their own personal response and growing in faith.

Cost:

We value this project at £250 per class: 5hrs teaching time, 7.5hrs prep & setup time, fuel, + £10 printing & resources.

We currently work with three primary schools on this project, costing £750 per year. To extend this offer to more schools and sustain an annual provision at no cost to each partnering school (a shared ethos with WTTB nationally), we are seeking £1300 annually (5 classes = 25 lessons).



CAP MONEY KIDS

CAP Money Kids is a course designed by the award-winning charity Christians Against Poverty (CAP) that currently teaches basic money management skills to over 10,000 people a year across the UK through their CAP Money Course.

Specifically tailored for schools, CAP Money Kids has been developed with teachers who are keen to equip the next generation with essential skills to ensure they are wise about money in the future. The course is designed to meet the requirements set out by curriculum in a fun, engaging way for children aged nine to eleven. Sessions cover topics such as budgeting, saving and spending, taught through interactive stories, games and real-life situations. It also touches on PSHE, life skills and numeracy, as well as developing teamwork and problem-solving skills. David (Tabz) is a trained Money Coach by Christians Against Poverty, and specialises in delivering these pre-prepared lessons for Year 5 and Year 6. He delivers the content as a series of three lessons, full of practical activities and thought-provoking teamwork exercises.

As a bonus, we always aim to champion and work alongside existing projects in the community around the school, such as adult money management courses and other services from the likes of Compassion Acts (a local Christian poverty reduction charity). The hope is to remove stigma in conversations at home and bring a healthier approach to everyday finances and expectations.

Cost:

We value this project at £200 per class: 3hrs teaching time, 4.5hrs prep & setup time, fuel, + £10 printing & resources.

We currently work with three primary schools on this project, costing £600 per year. To extend this offer to more schools and sustain an annual provision at no cost to each partnering school, we are seeking £2,700 annually (13 classes = 39 lessons).

We are also working on a continuity project called 'Valu£ You' for KS3, developing upon previous learning through CAP Money Kids.

COSTING SUMMARY:

We hope you enjoyed a tour of all our projects! Here's a summary of them all with costs attached, so you can see some of the impact the generosity of our supporters makes. The right column also shows the annual funding we'd need to work towards if we were to grow as our longer term vision outlines, expanding each project realistically to better meet the needs in our town.

Project	Current Annual Cost	Annual Cost of 5-Year Vision
Safe Space Assemblies & Workshops	£6,300	£12,600
Mission Impossible	£3,000	£11,000
Good Show Christmas Productions	£6,400	£10,000
It's Your Move	£650	£1,700
Secondary School Safe Space Project	£28,000	£65,000
Impact Youth	£6,400	£14,000
Sweaty Church	£4,000	£12,000
Similar After-School Clubs	£2,500	£3,000
You, Me & R.S.E	£1,400	£1,700
Walk Through The Bible	£750	£1,300
CAP Money Kids	£600	£2,700
TOTAL	£60,000	£135,000

TEAR-OUT PAGES:

A. NEWSLETTER + PRAYER CHAIN

B. FINANCIAL PLEDGE + GIFT AID

C. STANDING ORDER FORM

D. ADVERT FOR PRIMARY SCHOOL STAFF

If you know any primary school staff, help us spread the word about our work and online resources by tearing out the page and passing it on.

E. SAFE SPACE ADVERT FOR YOUNG PEOPLE

If you know any secondary school students, tear out the page and use it as a means to strike up conversation - maybe they already see us in school, maybe they don't, maybe they might check out our online channels... who know's where it could lead?!



SASWtrust

NEWSLETTERS

We sent periodic email newsletters out a few times a year. If you've been encouraged by what you've read about our work, we'd love to keep you up to date, share our news with you and consider you part of our community. Just pop in the relevant info and post this page to the address at the bottom of the page.

First Name:

Surname:

Email Address:

Name of your church (if applicable):

Data Protection

Please tick the box to confirm you would like to hear from Southport & Area Schools Worker Trust about our work via email.

You can unsubscribe at any time by clicking the link in the footer of our emails. We strive to adhere to EU privacy regulations in all circumstances, inclusive of GDPR legislation. Upon submitting this form, you a) are actively agreeing your consent to the above details being used by SASW Trust to communicate with you about their work and need for support in prayer, finance & practical help, and b) actively demonstrating your understanding that all details are stored in a secure online system through SASW Trust's MailChimp account, secure digital spreadsheets, or under lock & key.

PRAYER CHAIN

Please tick this box if you would like to receive an additional more regular email with requests for prayer for Southport & Area Schools Worker Trust each week during school term time. By ticking you confirm your permission for us to email you for the purpose of supporting the work of our organisation through prayer.

JOIN THE CHAIN

Please return this page to:

Southport & Area Schools Worker Trust,
c/o SNR Baptist Church, Scarisbrick New Road, Southport, PR8 6PU
(or pass it to someone you know associated with SASW Trust)

Please return this page to:
Southport & Area Schools Worker Trust,
c/o SNR Baptist Church, Scarisbrick New Road, Southport, PR8 6PU
(or pass it to someone you know associated with SASW Trust)



SASWtrust

FINANCIAL PLEDGE :

If you would like to support the work of Southport & Area Schools Worker Trust financially regularly or with a one-off donation, please fill out your details here and return to the address overleaf:

First Name:

Surname:

Street Address:

Postcode:

Email Address:

Data Protection

Please tick the box to confirm your permission for Southport & Area Schools Worker Trust to contact you about our work via email or post.

You can unsubscribe at any time by clicking the link in the footer of our emails. We strive to adhere to EU privacy regulations in all circumstances, inclusive of GDPR legislation. Upon submitting this form, you a) are actively agreeing your consent to the above details being used by SASW Trust to communicate with you about their work and need for support in prayer, finance & practical help, and b) actively demonstrating your understanding that all details are stored in a secure online system through SASW Trust's MailChimp account, secure digital spreadsheets, or under lock & key.

If you would like to make a ONE-OFF donation, please state the amount:

as cash / bank transfer / cheque

(delete as appropriate and include in envelope)

If you would like to make a REGULAR MONTHLY donation, please state the amount:

To process your regular monthly donation, please fill out the STANDING ORDER form on the following page and return to your bank (or return it to us and we will process it with your bank for you).

GIFT AID :

Please tick if you wish to Gift Aid all your donations made today, in the future, and in the past 4 years.

By signing below, I confirm that I have paid or will pay an amount of income tax and/or capital gains tax for each year (6th April to 5th April) during the last five years, and in the future, that is at least equal to the amount of tax ALL the charities or Community Amateur Sports Clubs (CASCs) that I donate to will reclaim on my gifts for that tax year. I understand that other taxes such as V.A.T. and Council Tax do not qualify. I will inform "Southport & Area Schools Worker Trust" if this ceases to be the case. I understand that "Southport & Area Schools Worker Trust" will claim 25p on every £1 of the donation I have given.

Signed:

Date:

Please return this page to:
Southport & Area Schools Worker Trust,
c/o SNR Baptist Church, Scarisbrick New Road, Southport, PR8 6PU
(or pass it to someone you know associated with SASW Trust)



SASWtrust

STANDING ORDER MANDATE :

To process your regular monthly donation detailed on the previous page, please fill out this STANDING ORDER form and return to your bank (or return it to us and we will process it with your bank for you).

To the manager of (bank name / building society):

Bank address:

I would like to become a regular giver and set up a STANDING ORDER from my bank account:

Please debit my account as detailed below for the sum of

£

every month/quarter/year (delete as appropriate) with the first payment being on the

date of:

and until further notice and credit these amounts to the account of:

Southport & Area Schools Worker Trust, Acc No. 41487485, Sort Code 40-42-30 at HSBC, 331 Lord St Southport, PR8 1NJ

Name on my account:

Account Number:

Sort Code:

Signed:

Date:



SASWtrust

Dear Primary School,

Have you heard of the charitable work of Southport & Area Schools Worker Trust providing children and young people in Southport with exciting opportunities to explore the big issues of life and faith? Here's some ways we'd love to help you, for free, and with quick online booking available from www.saswtrust.com



Our most loved & longest running production, although many would describe it as more of an 'experience'! Every year we kit out Scarisbrick New Road Baptist Church into a secret agent headquarters. We acquire a large team who act as secret agent leaders who greet your pupils (usually year 6s, although some schools prefer to bring year 5s), enlist them as secret agents for the day, where they are led on a mission of discovery by Agent T (True) and Agent F (False). In four squads the pupils move around different mission zones where they look at aspects of the Easter story in order to reach their own personal verdict on the events & whether or not Jesus rose from the dead. The presentation lasts 90 minutes and the sessions will be at 10am and 1:15pm each day during the last three weeks of Spring Term (before the Easter holidays).



CHRISTMAS PRODUCTIONS!

Every year we produce a fresh 45 minute production from scratch for the primary schools of Southport and beyond. From Frozen, to The Greatest Snowman, to superheroes, to the Lion King, to whatever other themes we've been able to get our hands on, our productions have been touring Southport & beyond since 1999.

We're currently writing this year's script and are already getting rather excited! The last 3 year's productions were also available as a video, so you can have a watch here to get an idea of what we may have in store!

Our in-person production is 45 minutes long, fine for KS1 & KS2, and we'll need 30-40 minutes to set up beforehand. The good news is that it's completely free!



Another speciality of ours is our assemblies, 'collective worships', RE + PSCE lessons and workshops. You can book Tabz/Hettie/both in to visit your school and lead an assembly on a topic of your choice from the wide range listed in our online booking catalogue (or a custom topic). Each of our assembly sessions can also be viewed in video form, which you can access freely and watch in the classroom without the need to book.

Scan the QR code or head to primaryinfo.saswtrust.com to us in from the catalogue, or read up on the rest of what we have to offer, from Anti-Bullying Week, to Year 6 Transition Workshops, to RSE, to CAP Money Skills, and much more! We hope to hear from you soon!



safe

SPACE

s|A|s|W|trust

*In High schools
and Online*

A SAFE SPACE TO EXPLORE THE
BIG ISSUES OF LIFE AND FAITH

SUBSCRIBE



Online: www.safesp.uk

Journey with Tabz & Hettie through secondary school life at our lunchtime Safe Spaces and through Safe Space Online - fun, life, faith, wellbeing & loads more! Are you in high school? Know someone who is? Head over to our website, YouTube Channel or Instagram right now to get connected!



